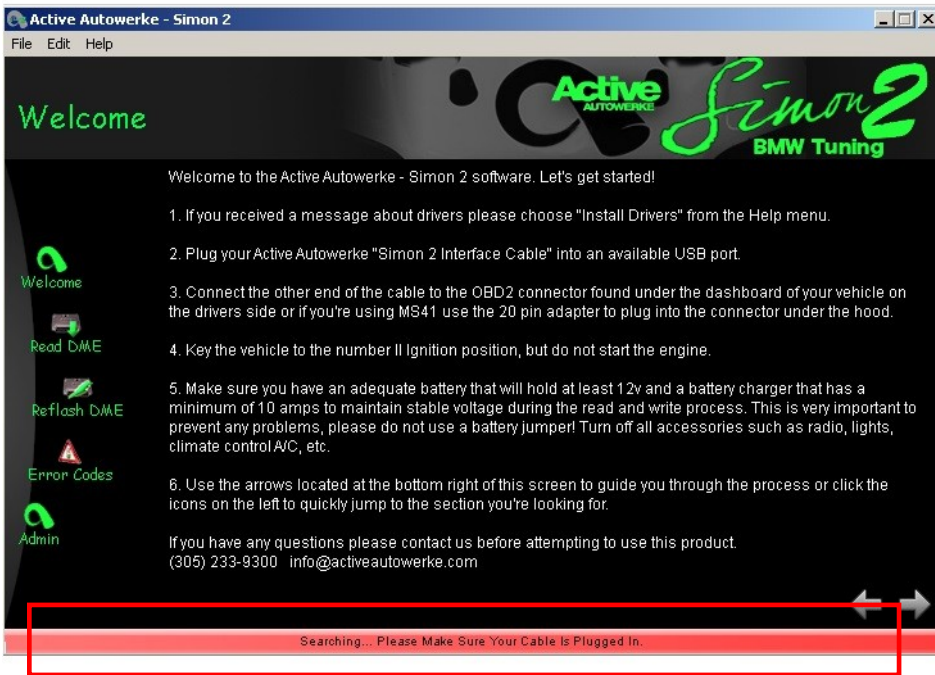




How to use Simon 2 Software



1. After download the executable from our website (<http://store.activeautowerke.com/pages/downloads>) run the software, you will see a red bar in the bottom of the software.



2. Plug the simon 2 cable into the usb port and wait until the bar is green, that will mean that the computer is getting good communication with the simon 2 cable, try different usb ports if you can't get this green bar .

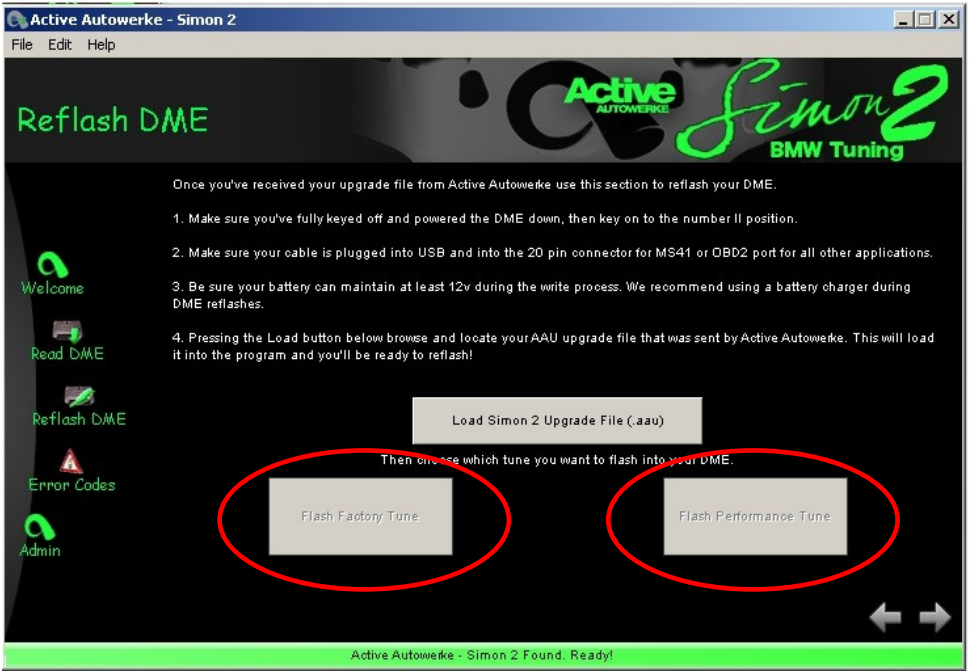


3. Full fill the form with all the information requested, the modifications in the car and the full name and the BMW model as well, the vin number will be filled automatically.

4. Plug the Simon cable into the ODBII port in the car and switch the ignition on (the dashboard will show the ABS ,Brake, SES lights on, but the engine is not running), press the read DME button . **Don't touch the ignition key anymore until you finish the reading.** Some messages

will pop up just to warn you about the battery voltage and the ignition state needed. Always use a battery charger with 14.2 volts and 3 Amp minimum.

5. After the reading save the file (.aae) into your computer , and sent it to the software support email address softwaresupport@activeautowerke.com



6. And .aau file will be send to you and that file will contain inside the tuned file and the original file , the one to the right **Flash Performance tuned** is the tuned file and the one to the left **Flash Factory Tuned** is the original. Flash the car via ODBII and remember to switch the ignition on and use a battery charger.



7. Wait until the progress bar in the bottom reach the 100 % and take out the key, wait for 15 seconds and then start the car.



8. The simon 2 will also check error codes, and it will clear those, you can also clear the adaptations in the car, this will allow the car to run straight to the software without making any adjustments. Most recommended for the E46 M3 models with a supercharger tuned.